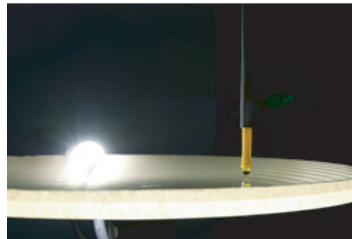


from/to #5

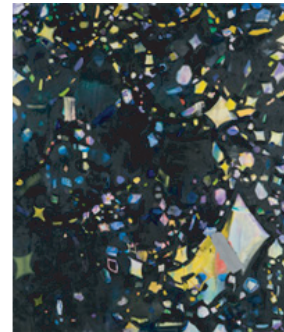
HAYAKAWA Yuta
MURAOKA Sachiko

July 16 - August 8, 2009

Opening reception: Thursday, July 16, 6-8PM



Hayakawa Yuta: *COSMOS*



Muraoka Sachiko: *electric*

Opening Thursday, July 16, Wako Works of Art is very pleased to present its fifth installment of the summer group exhibition project from/to. This year's show will include works by two artists, Yuta Hayakawa and Sachiko Muraoka.

Through his installations, Hayakawa seeks to take simple physical phenomena, such as gravity and water surface tension, and to represent such subtle perceptions and signs of presence as a form of art. This delicate and highly deliberated mimesis gives rise to a new sense of wonder in the natural processes.

Muraoka's oil paintings are composed of a vibrant array of fragments dispersed on a black painted surface. The lightweight shapes seem to form constellations and at the same time appear to be insignificant decorative elements. The jewel-like forms, devoid of size relativity, seemingly float and dispel the composition, making the audience aware of the larger image that spreads beyond what is visible to their eyes.

Yuta Hayakawa

Born in 1984 in Gifu, graduated from Musashino Art University in 2008 with an undergraduate degree in sculpture, and currently pursuing his Masters. He has shown in exhibitions such as "plastic trees/ceramic girl" (2008, CAMP/Otto Mainzheim Gallery, Tokyo), "Re:Membering – The Next of Japan" (2009, Alternative Space Loop, Seoul), "'No Future', No Future" (2009, Art Center Ongoing, Tokyo)

Sachiko Muraoka

Born in 1983 in Kanagawa and a recent graduate of Musashino Art University's Masters program in oil painting. Past exhibitions include: "The Next" (2008, Gallery Stump Kamakura, Japan), "Skip!" (2007, Gallery Stump Kamakura).

Please join us for a reception for the artists on Saturday, July 28, 2007 from 6pm to 8pm.

For further information please contact the gallery at 81-(0)3-3373-2860 or info@wako-art.jp.

WAKO WORKS OF ART

3-18-2-101/103 Nishi-Shinjuku, Shinjuku-ku, Tokyo 160-0023, Japan

Tel: (0)3-3373-2860 Fax: (0)3-3373-2812

Gallery hours 11:00-19:00

Closed on Sundays, Mondays, and public holidays